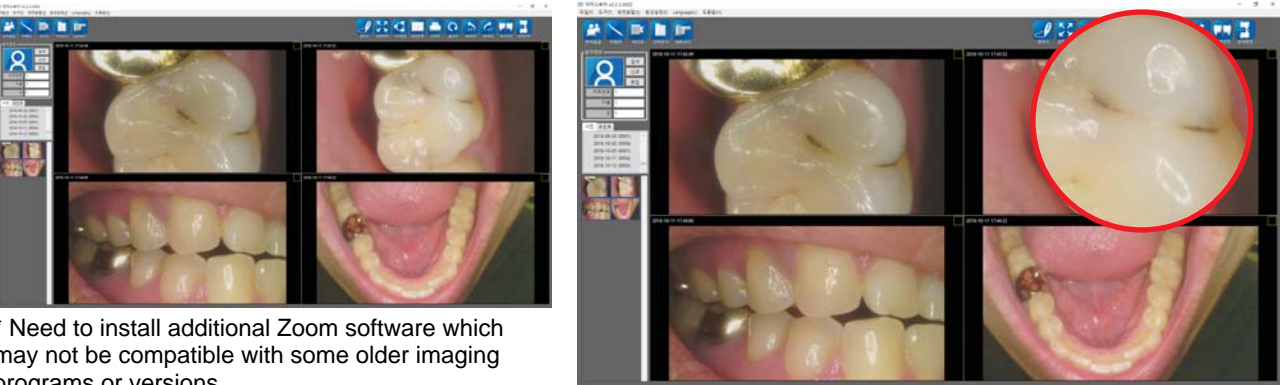


Polaroid



Zoom function *

Ability to enlarge the image with zoom feature to support user convenience.



* Need to install additional Zoom software which may not be compatible with some older imaging programs or versions.



Software compatibility

Plug-N-Play UVC drivers and optional twain driver make it able to be used with almost any dental imaging software in the market.



1 Specification

Model	P1080	1920 X 1080 FHD
Camera	Power source	5V (USB power)
	Size	Approx. 128 x 21.5 x 32 mm
	Weight	Approx. 61g (2.2oz)
	Sensor type	5MP CMOS sensor
	Lighting	White LED x 12 pcs
	Focusing	Liquid Lens Auto-focus
	Focus range	Macro to infinity
	Focus range	Macro to infinity
USB cable	cable length	Approx. 3 M (9.8ft)

2 Recommended PC system

PC system:	3.3GHz CPU, 4GB RAM
OS:	Windows 8 on up and Mac
USB port:	USB 2.0 / 3.0



P1080



Macro to Infinity

Autofocus Dental Camera with Mouse



Polaroid HealthCare

844-789-5050

www.polaroidhealth.com

17609 Ventura Blvd. #115 | Encino | CA | 91316 | E-mail. info@Polaroidhealth.com



Manufactured in



ISO-13485
Facility

Features of P1080

Image quality

**Macro to infinity**

Camera is able to focus from macro mode (close) to infinity that includes a full arch and face shot.

**Auto-focus Liquid lens Optics**

Camera is able to focus in any position not only inside of oral cavity but also full arch and face shot.

**FHD image support**

The device shows FHD (1920 X 1080p) in live image supported by a 5MP sensor.

**Color impressions**

Adjust the color impression on camera to fit different monitors or screen.

**Black&White function**

Capture and save X-ray film image to PC

**Dental handpiece design**

Familiar and comfortable design for dentists.

**Metal body case**

Metal body increases product durability.

**Slim head size**

Slim head design makes it easier to approach the oral cavity with camera.

**Retraction head design**

Retract patient's tongue and cheek to get better image.

**Efficient brightness**

12 Adjustable LEDs makes for efficient brightness.

**Dual capture buttons**

Capture buttons are placed on the top and bottom side of camera to make for an easy capture in any position

**LED indicators**

LED indicators show the device status and mode.

Ergonomic design

**Mouse function**

Built-in mouse function for user convenience.

**Zoom function***

Ability to enlarge the image with zoom feature to support user convenience.

**LED brightness adjust**

Ability to adjust the LED brightness.

**Support twain driver**

Twain driver allows for use in cloud based imaging software.

**Software compatibility**

Plug-N-Play with almost any dental imaging software on the market.

**Detachable USB cable**

Detachable USB cable makes it easy to move the camera to other dental chairs.

* Requires additional software and may not be functional with some softwares.

Convenience



Polaroid P1080

**Macro to Infinity**

Camera is able to focus from macro mode (close) to infinity that includes a full arch and face shot with just one press of the capture button!.

**FHD image support**

The device shows FHD (1080p) in live image supported by a 5M sensor.



Full HD



Original image



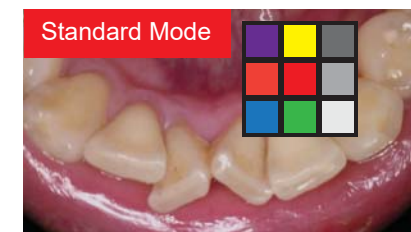
HD

**Color impressions**

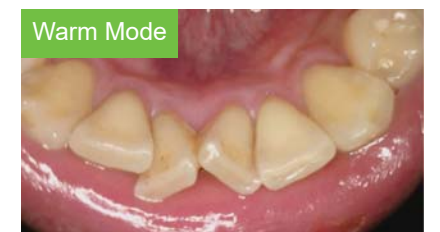
Adjust the color impression on camera to fit different monitors or screen.



Original Mode (Default)



Standard Mode



Warm Mode

Same color chart image with xrite

